



## Experiment 1: Bacteria Isolation from Soil Samples

### Data Tables and Post-Lab Assessment

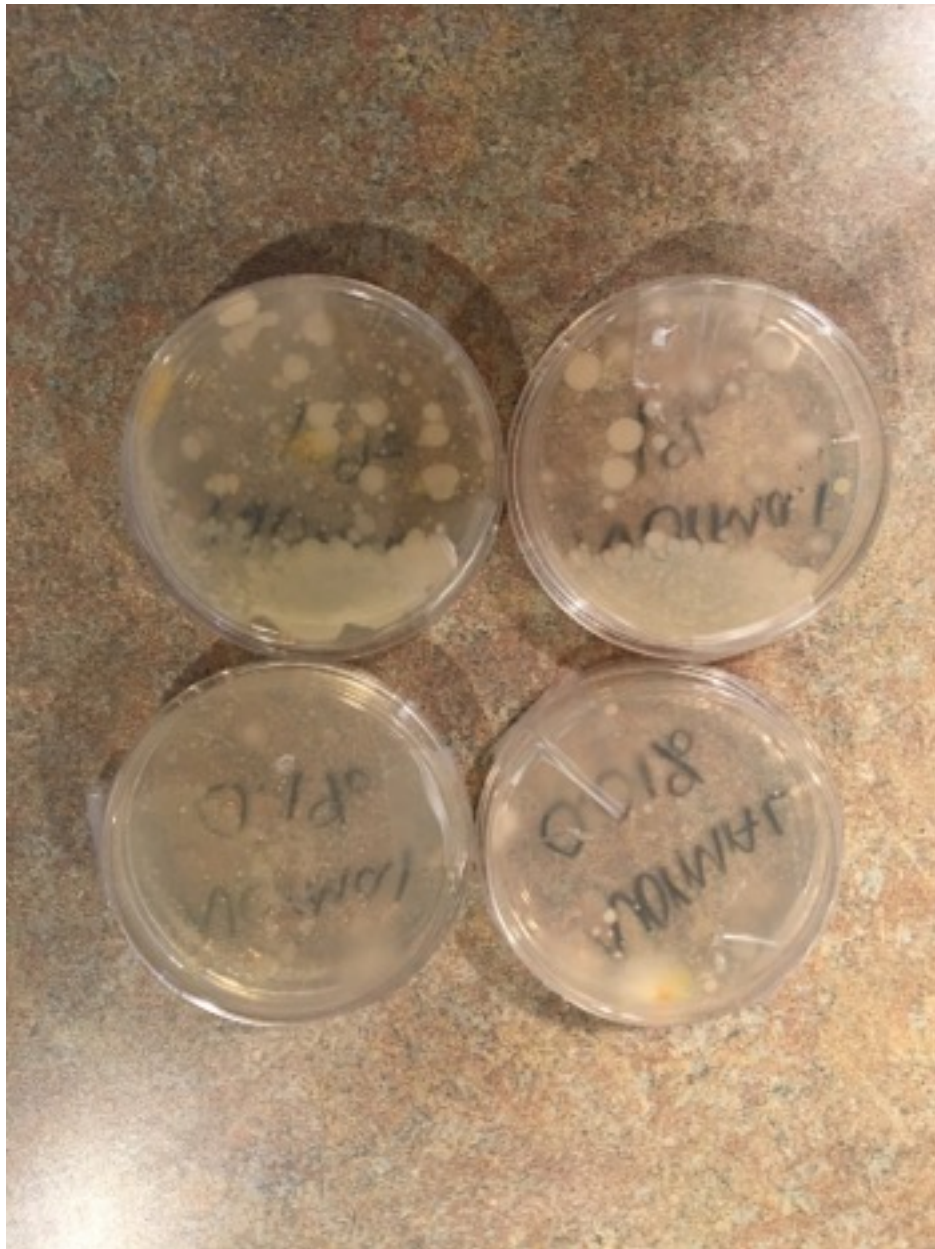


### Post-Lab Questions

1. Observe the two sets of plates. Determine the CFU/mL of each solution (normal and heated), remembering to use a plate that has between 30 and 300 colonies. Please refer to the resources shared by your instructor in the classroom to assist in this process.



- a. Is there a difference in the CFU/mL counts for the two treatment conditions?
- b. What accounts for this difference?





2. How are the colonies from the two treatment conditions different (e.g. size, color, shape, et cetera)?
3. What effect does the heating and cooling procedure have on the bacteria present in the soil samples?





4. What is the source of the bacterial colonies in the heated samples?